

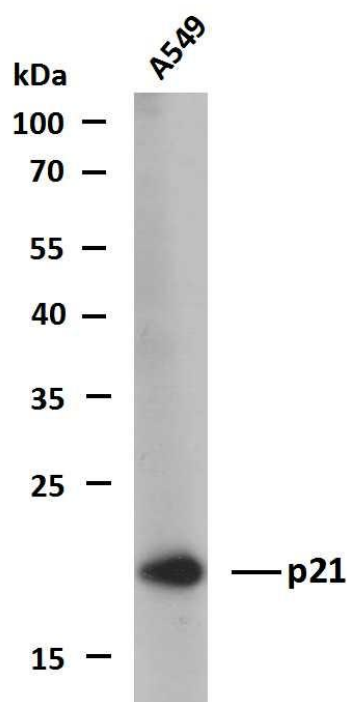


p21(PTR2559) mouse mAb

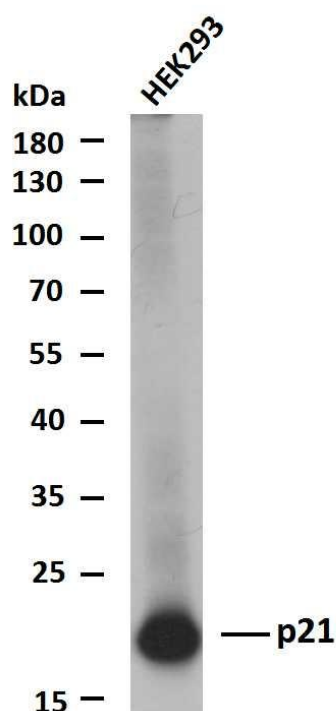
货号	YP-Ab-18092
同位型	IgG
应用	IHC;WB;IF;ELISA
种属	Human;Mouse;
靶点	P21
基因名称	CDKN1A CAP20 CDKN1 CIP1 MDA6 PIC1 SDI1 WAF1
蛋白名称	p21
免疫原	Synthesized peptide derived from human p21 AA range: 1-100
特异性	This antibody detects endogenous levels of p21 protein.
组成	PBS, 50% glycerol, 0.05% Proclin 300, 0.05%BSA
来源	Mouse, Monoclonal/IgG1, kappa
稀释	IHC 1:200-1000. WB 1:500-2000. IF 1:100-500. ELISA 1:1000-5000
纯化工艺	Protein G
其他名称	Cyclin-dependent kinase inhibitor 1 ;CDK-interacting protein 1;Melanoma differentiation-associated protein 6;MDA-6;p21;
分子量	21kD
实测条带	21kD
功能	function:May be the important intermediate by which p53 mediates its role as an inhibitor of cellular proliferation in response to DNA damage. Binds to and inhibits cyclin-dependent kinase activity, preventing phosphorylation of critical cyclin-dependent kinase substrates and blocking cell cycle progression.,induction:By p53, mezerein (antileukemic compound) and interferon beta.,PTM:Phosphorylation of Thr-145 by Akt or of Ser-146 by PKC impairs binding to PCNA.,similarity:Belongs to the CDI family.,tissue specificity:Expressed in all adult human tissues, with 5-fold lower levels observed in the brain.,
细胞定位	Cytoplasmic, Nuclear
组织表达	Expressed in all adult tissues, with 5-fold lower levels observed in the brain.
浓度	1 mg/ml
储存	-15°C to -25°C/1 year(Do not lower than -25°C)
有关注意事项	Avoid repeated freezing and thawing!
使用建议	This product can be used in immunological reaction related experiments. For more information, please consult technical personnel.



Products Images



Whole cell lysates of A549 were separated by 12% SDS-PAGE and the membrane was blotted with anti-p21(PTR2559)antibody, The HRP-conjugated Goat anti-Mouse IgG(H + L)antibody was used to detect the antibody. Lane 1:A549



Whole cell lysates of HEK293 were separated by 12% SDS-PAGE, and the membrane was blotted with anti-p21(PTR2559)antibody. The HRP-conjugated Goat anti-Mouse IgG(H + L)antibody was used to detect the antibody. Lane 1:HEK293



Whole cell lysates of MCF7 were separated by 12% SDS-PAGE and the membrane was blotted with anti-p21(PTR2559) antibody. The HRP-conjugated Goat anti-Mouse IgG(H + L) antibody was used to detect the antibody. Lane 1: MCF7

